

**START YOUR
INTERNATIONAL
JOURNEY HERE!**

INCLUSIVE

INTERNATIONAL SCHOLARSHIPS AVAILABLE



**AVILA
UNIVERSITY**

NESTLED ON A TRANQUIL 50-ACRE CAMPUS JUST 15 MINUTES AWAY FROM VIBRANT DOWNTOWN KANSAS CITY, AVILA UNIVERSITY OFFERS A UNIQUE BLEND OF PEACEFUL SUBURBAN LIVING AND DYNAMIC URBAN EXPERIENCES.

FAST FACTS

Founded in 1916 by the Sisters of St. Joseph of Carondelet

Student/Faculty Ratio, 13:1 with an average class size of 15

3600 Students

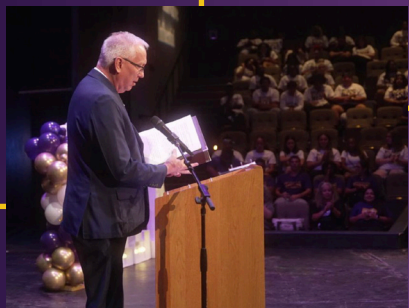
1600 International Students

Students from 45 Countries

NAIA Membership

Organizations:

Avila offers more than 50 organizations, including honor societies, academic, and special interest organizations.



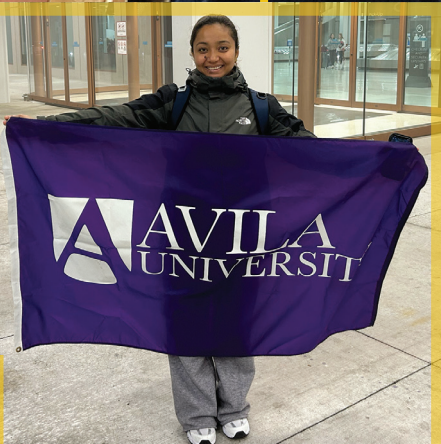
WHY AVILA?

- Avila is Top Performer (#18 – Regional Universities in the Midwest) in Social Mobility
- STEM degrees in both undergrad and graduate levels
- On Campus housing and dining available
- Avila campus is fifty acres in residential, suburban south Kansas City
- Host the 2026 World Cup

WHY KC?

- Kansas City is ranked as one of the TOP 10 BEST PLACES TO VISIT in the WORLD
- Home to four professional sports teams including the Kansas City Chiefs, Sporting KC, KC Current and KC Royals
- 100 BBQ restaurants, 29 lakes, 134 miles of trails and bikeways





ABOUT AVILA UNIVERSITY

Avila University offers students a global perspective while delivering a world-class education in the United States. With the diversity of the campus, students studying at Avila can experience different cultures and build global networks.

Avila offers various undergraduate and graduate programs, delivering accredited degrees which lead to various employment opportunities.

A degree earned from Avila gives students a competitive edge in numerous work fields and industries abroad.



WHY AVILA UNIVERSITY?



SMALL CLASS SIZES

With a 13:1 student-to-faculty ratio, Avila's attentive faculty provide students with personal attention and support.



DIVERSITY

Avila's campus is home to students from 45 countries.



ACCREDITATION

The Higher Learning Commission accredits Avila University.



CAMPUS IN KANSAS CITY (MISSOURI)

Kansas City is a vibrant metropolis with world-class dining, shopping and cultural attractions.



AVILA UNIVERSITY

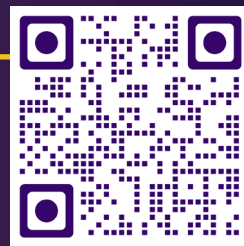
REFER a friend
to Avila and
earn exciting
REWARDS.

Exclusive Scholarships Available!

UNDERGRADUATE



GRADUATE



SCAN & SIGN UP

Simply scan the QR code to register as an Avila Ambassador.



SPREAD THE WORD

Share Avila with your friends and family. Let them know about Avila's Programs.



EARN REWARDS

\$500 tuition rebate awarded to the referring student for each successful referral (paid 90 days after the start of session the new student begins at Avila).



ADMISSION REQUIREMENTS

Undergraduate Requirements

- Official high school transcripts
- Minimum GPA of 2.5 or above (4.0 scale)*
- Copy of passport
- Verification of financial support

*Transfer students – Minimum GPA of 2.0 or above with any compatible bachelor degree

Graduate Requirements

- Official transcripts and Degree Certificate
- Minimum GPA of 2.75 – MBA and
- 3.0 – Psychology related Programs (Applicants between a 2.5 and 2.749 GPA will be considered for provisional admission)
- Copy of passport
- Verification of financial support

APPLYING FROM OUTSIDE THE U.S.? USE THIS APPLICATION FORM!



ENGLISH PROFICIENCY

	IELTS	TOEFL	Duolingo	PTE
Undergraduate	5.0	61	90	50
Graduate	6.0 (5.5 for Conditional Admit)	73 (46-59 for Conditional Admit)	95	50

*Conditional Admit: A prescribed pathway heavy on math with ongoing ESL support through the first year.

TUITION & SCHOLARSHIP FOR INTERNATIONAL STUDENTS

	Tuition (per year)	Total Tuition	Scholarship (per year)	Total Scholarship*	Tuition** after Scholarship (per year)
Undergraduate	\$41,540	\$166,160	\$25,815	\$103,260	\$15,725
Graduate	\$11,700	\$23,400	\$2,500	\$5,000	\$9,200

*Scholarship amount is applicable on the total course duration fee.

**Other applicable fees apply beyond tuition, including: Living Expenses, Health Insurance, Books & Materials, Personal Expenses.

For example - \$11,700 is the annual tuition total at 9 hours per term, 2 terms a year (fall and spring) for a total of 18 hours. The student must take 18 hours or more in an academic year to receive the \$2,500 (yearly) Scholarship.

Avila University empowers students to lead with purpose—through values-driven education, real-world experience, and a community that champions your success from day one.

— Udit Kaura, MBA in International Business



TRANSFER TO AVILA

INTERNATIONAL STUDENT ELIGIBLE PROGRAMS AT AVILA

LOCATIONS:

**KANSAS CITY, KENOSHA,
DALLAS, LOS ANGELES, MIAMI,
AND NEW JERSEY**



GR STEM Program

APPLICATION PROCESS

1. Submit online application
2. Submit all required admissions materials (refer to Page 7 for more details)
3. Upon receiving admissions letter, coordinate SEVIS record transfer with DSO at current institution



Graduate Transfer Application



Undergraduate Transfer Application

PLEASE NOTE: International students applying from outside the United States are required to attend classes in person on the main campus in Kansas City. Graduate students must complete at least one full academic year on campus, while undergraduate students are required to attend in person until they turn 21 at minimum. **No exceptions will be made.**

COLLEGE OF ARTS AND SCIENCES – TRADITIONAL

School of Allied Health Sciences
Bachelor of Science
Kinesiology, B.S.
Minor
Kinesiology Minor
Rehabilitation Science Minor

School of Business
Bachelor of Science
Applied Science, B.S.
Bachelor of Science in Business Administration
Accounting, B.S.B.A.
Business Administration, B.S.B.A.
Finance, B.S.B.A.
Healthcare Administration, B.S.B.A.
International Business, B.S.B.A.
Management, B.S.B.A.
Marketing, B.S.B.A.
Minor
Accounting Minor
Business Administration Minor
Finance Minor
International Business Minor
Management Minor
Marketing Minor

School of Psychology
Bachelor of Arts
Psychology, B.A.
Minor
Psychology Minor

School of Science, Technology, Engineering, and Mathematics (STEM)

Bachelor of Arts
Computer Science, B.S. (STEM)
Cybersecurity, B.S. (STEM)

Minor
Computer Science Minor
Cybersecurity Minor

School of Social Sciences

Bachelor of Arts
Criminology & Justice Studies, B.A.

School of Visual & Communication Arts
Bachelor of Arts
Communication, B.A.

COLLEGE OF INNOVATIVE PROFESSIONAL & GRADUATE STUDIES – LOW RESIDENCY PROGRAMS

School of Science, Technology, Engineering, and Mathematics (STEM)
Bachelor of Science
Computer Science, B.S. (STEM)
Cybersecurity, B.S. (STEM)

School of Business
Bachelor of Arts
Business Administration, B.A.
Healthcare Management, B.A.
Human Resources, B.A.
International Business, B.A.
Management, B.A.
Marketing, B.A.

Minor
Business Administration Minor
Healthcare Management Minor
Human Resources Minor

School of Psychology
Bachelor of Arts
Psychology, B.A.

Minor
Psychology Minor

School of Social Sciences

Bachelor of Arts
Criminology & Justice Studies, B.A.

GRADUATE PROGRAMS – HYBRID

School of Business
Master of Business Administration (MBA)
Accounting
Executive Leadership
Finance
Healthcare Administration (STEM)
International Business
Management
Marketing
Project Management (STEM)
Strategic Human Resources

School of Psychology
Master of Science (M.S.)
Psychology

School of Technology

Master of Science (M.S.) – Technology Management
Computer Science (STEM)
Cybersecurity (STEM)
Business Analytics (STEM)
Data Science (STEM)
Artificial Intelligence (STEM)
Engineering Operations (STEM)
Digital Marketing
Master of Arts (M.A.)
Digital Marketing and Social Media Management

GRADUATE PROGRAMS – ON-CAMPUS

School of Business
Master of Business Administration (MBA)
General
Project Management (STEM)
Healthcare Administration (STEM)
International Business
Management
Marketing
Accounting

School of Science
Master of Science (M.S.)
Psychology (STEM)

School of Technology

Master of Science (M.S.) – Technology Management
Digital Marketing (STEM)
Business Analytics (STEM)
Cybersecurity (STEM)
Computer Science (STEM)
Data Science (STEM)
Artificial Intelligence (STEM)
Engineering Operations (STEM)

School of Arts

Master of Arts (M.A.)
Digital Marketing and Social Media Management



CONTACT INFORMATION

Avila International Admissions
avilainternationalapp@avila.edu

816.501.0444

11901 Wornall Road, Kansas City, MO 64145

LEARN MORE!

